



STRAP EATER

THE MACHINE
WITH BITE

OWNER'S MANUAL

Serial Number: _____

Purchase Date: _____



Rudnicki Industrial Inc.

1550 Dawson Road
Thunder Bay, ON P7G 2E5

TEL: 1 (807) 767-0770

TOLL-FREE: 1 (888) 421-0770

FAX: 1 (807) 767-0785

EMAIL: sales@strapeater.com

www.strapeater.com

Like our page for the latest photos and videos!

[Facebook.com/StrapEater](https://www.facebook.com/StrapEater)

Table of Contents

Section	Page
1.0 Unpacking & Getting Started	4
2.0 Using the Strap Eater	6
3.0 Maintaining the Machine and Blades	8
4.0 Important Notices	12
5.0 Optional Accessories (Details & Assembly Diagrams)	13

1.0 Unpacking & Getting Started

Thank you for purchasing a Strap Eater from Rudnicki Industrial!

We offer a 6 month warranty on the unit's components as well as accessory components

- 1.1 Open the top of the box and remove the frame inside. Remove the 2 screws holding the board across the top of the machine.
- 1.2 Turn the machine upside down and lift the box off.
- 1.3 Bolt the frame to the bottom of the chopper body using the bolts supplied **[2x Frame Bolts]**. Flip the machine back upright.
- 1.4 Place the Strap Eater on a stable container or support, such as a stand, table, sawhorses, or barrel. Be sure that the bottom of the cutter opening is clear to allow for passing of strapping pieces as they are being cut. Straddling the machine over a barrel, box, or pail will accommodate easy removal of cut material.
- 1.5 Screw in the release handle through the hole on the front lower right of the cover and tighten with an adjustable wrench (should be approximately $\frac{3}{8}$ "



Check the unit from below with a light to ensure there are no wires can contact moving components. Check on the left (the wiring from switch to rear), and the rear (the wiring from motor to cover).

- 1.6 **Be sure the switch is off**, then plug in the machine.
- 1.7 Turn the machine on. A slight ticking sound is normal as blade tolerance is very close.
- 1.8 Test the release by pushing the handle down. This lowers the idler from the drive roller and allows removal of strapping without tugging.



We are trying to use renewable products such as paper and wood in the packaging of this product. We encourage the recycling of products whenever possible – when everyone pitches in a little the progress becomes great!

2.0 Using the Strap Eater

**ALWAYS WEAR SAFETY GLASSES AND GLOVES WHEN HANDLING
STRAPPING**

Operation is simple: insert a length strapping into the in-feed chute, and allow it to chop! The Strap Eater automatically draws in the remaining length of strapping.

- **Avoid** bent and tangled strapping piles; the machine draws the strapping in quickly.
- **Avoid** running clips through the machine. Running clips through the Strap Eater can mean as many as four straps plus the clip are being cut at the same time. This will jam the chopper!

Tip: To avoid down-time, bend the strapping just in front of the clip so that the clip will hit the feed-plate and stop. Push the release to remove the strapping and feed it in from the

opposite end. This will leave about a 20cm (8 inch) piece, which can be discarded. You may also choose to cut clips off before feeding in the strapping.

When not in use: make sure the machine is shut off to minimize heat within the unit.

Note: Strapping is very heavy when chopped. Be sure to not overload a container such that it becomes too heavy to move safely.

3.0 Maintaining the Machine and Blades

Blade adjustment is just as important as blade sharpness. If the performance of the machine begins to degrade, inspect not only the sharpness of the blades, but also the alignment and blade gap.

The blades have four cutting edges each and can be indexed, sharpened, and adjusted.

To inspect the blades: **Unplug the machine** and remove the cover. Check the condition of all three blades. There is one blade (anvil) bolted to the front of the main housing under the infeed slot and two on the rotor.

Consult **Figure 3-1** on the following page for a diagram

To adjust or index blades:

- 3.1 **DISCONNECT THE POWER SUPPLY**
- 3.2 Break loose the fasteners that hold the blades to the rotor (**item 1** – $\frac{5}{16}$ " hex key).
- 3.3 Re-tighten slightly.
- 3.4 Loosen the jam nuts on the adjuster bolts (**item 2** – $\frac{7}{16}$ " wrench).
- 3.5 Turn the adjuster bolts (**item 3** – $\frac{1}{4}$ " wrench) until the blades on the rotor are just touching the anvil blade across the entire edge. Test blade closeness by inserting a strip of paper between the drive and idler rollers (into the same place you would insert strapping – then by manually cranking the large pulley on the machine's right side, you should be able to slice the piece of paper with very little force.
- 3.6 Firmly tighten and then retorque the socket-head cap screws with the $\frac{5}{16}$ " hex key to **25 ft/lbs**. Hold the adjuster screws with the $\frac{1}{4}$ " wrench, and tighten the jam nuts with the $\frac{7}{16}$ " wrench. Use a strip of paper to again check that the blades are still in adjustment. If the paper is not easily cut, tighten the adjuster screws about 1/4 turn at a time; in order to make this final [minor] adjustment, the

adjuster screws should turn enough without loosening the socket-head cap screws or jam nuts.

- 3.7 Once all blades are adjusted and all bolts tightened back down on the blades, operate the unit several rotations by hand. Ensure that the blades on the rotor easily clear, or just slightly make a ticking sound against the anvil blade. If any are too close this can cause motor or belt failure.

Be aware that using the unit during different seasons or locations with different humidity may influence the blade clearance. If the machine isn't used frequently, remove the cover and spin the rotor by hand several times to ensure the blades do not interfere with one another. Readjust blades if necessary.

- 3.8 Replace the cover and plug the motor into the harness at the back of the cover. The harness may be plugged in before putting the cover back on.

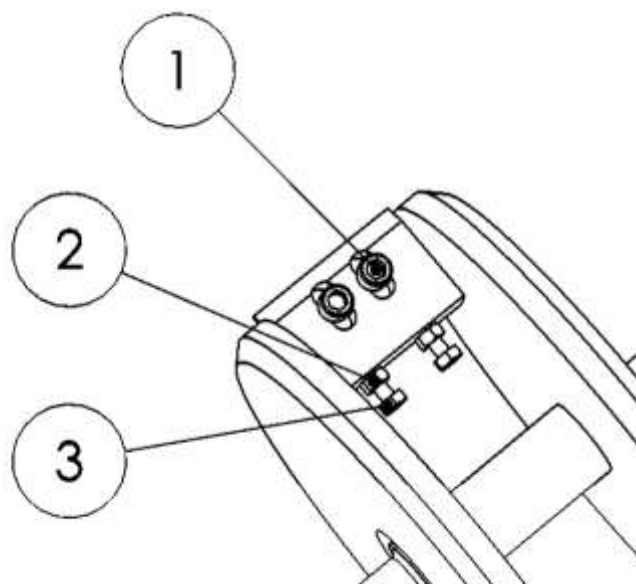


Figure 3-1. Blade adjustment fasteners.

4.0 Important Notices

- 4.1 Tolerances on the blades are very close and may be affected by environmental conditions. The blades may need adjustment if the machine is in a particularly cold or warm environment.
 - 4.2 This unit is equipped with 2 overload protectors: the main power switch, and one on the motor.
 - 4.3 Avoid using long or light duty extension cords as this has been known to overload the circuit, causing the machine to turn off.
- To reset the main power switch, simply turn the switch off and back on.
 - To reset the motor, first disconnect the power supply of the machine, remove the cover, and press the reset button on the junction box of the motor. Reinstall the cover once the motor is reset and reconnect the power supply. Do not attempt to power up the machine with the cover removed.

5.0 Optional Accessories (Details & Assembly Diagrams)

Accessories designed specifically for the Strap Eater and manufactured in-house for perfect fit and finish. Brief descriptions, assembly and usage instructions are provided in the following pages for both our **Strap Steady Stand** and **Strap Stops** set. Your Strap Eater comes with a **6 month** warranty on the unit's components & accessories (from purchase date)

Warranty on this unit (# _____) is valid until _____

If you would like to order either of these accessories for your Strap Eater, please contact us directly, or place an order through the Strap Eater website at:

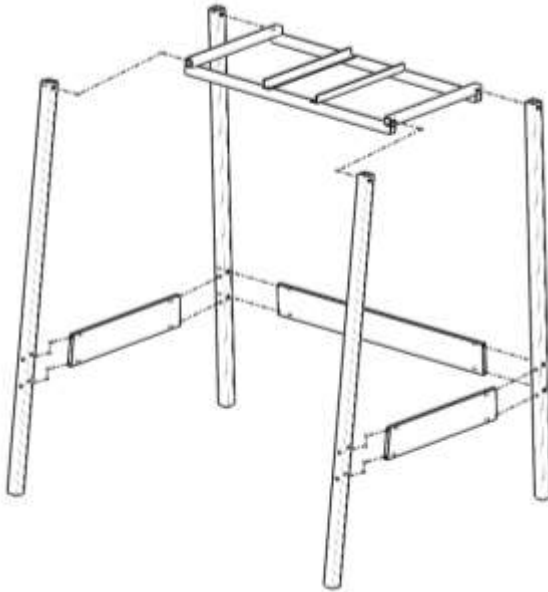
<http://strapeater.com/order>



Strap Steady Stand

A stable stand, designed to straddle barrels and other recycling containers. Kit includes all structural members and fasteners required. The stand attaches to threaded holes on the sides of the Strap Eater base frame and is shipped disassembled.

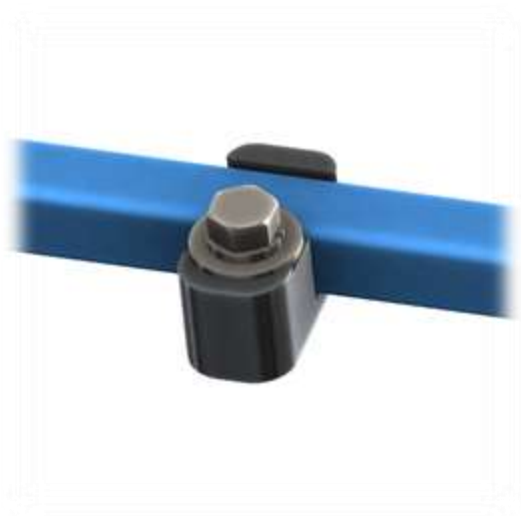
Stand Assembly



- [12x stand hardware] fasteners are 1/4-20 hex head bolts (ie. These connect the lower crossmembers to the legs)
- [4x frame hardware] fasteners are 3/8-16 hex head bolts (use 9/16" wrench)
- All bolts should be used with supplied flat washers
- Build the entire stand then install the machine on top of the completed, **tightened** unit. Do not try to assemble the stand with the Strap Eater on the upper frame.

Figure 5-1. Strap Steady Stand assembly.

Strap Stops



Strap Stops take the drama out of chopping. These easy-to-use, adjustable clamps are designed to keep your Strap Eater fixed over top of any opening. Simply clamp the stops on the frame of the Strap Eater up against the inner edge of the container or opening, with the bolt vertical or horizontal. It's that simple.